

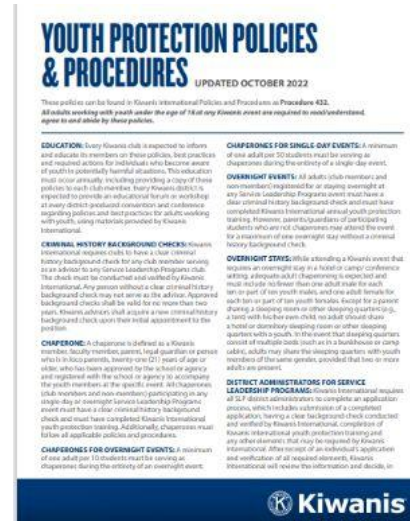
Protecting youth in Kiwanis service: Know. Protect. Respond.

August 2025

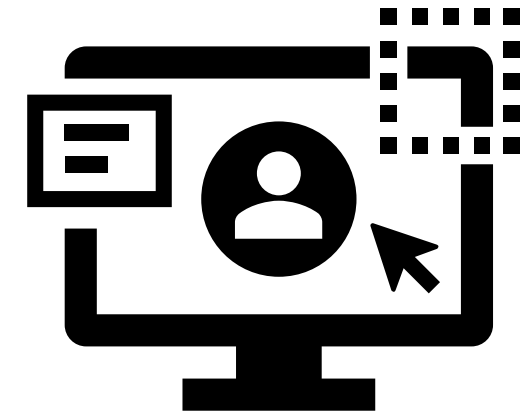
Learning objectives



Know why youth protection matters.



Learn Kiwanis policies, how to protect youth & prevent abuse.



Respond to abuse, inappropriate behavior and policy violations.



Know why youth protection matters

Kiwanis Service Leadership Programs serve the world



Adult clubs		MEMBERS	CLUBS	NATIONS/ GEOGRAPHIC AREAS	AUDIENCE
	aktionclub.org	5,738	564	13	Adults with disabilities
	circlek.org	8,463	580	20	College and university students
Youth clubs		MEMBERS	CLUBS	NATIONS/ GEOGRAPHIC AREAS	AUDIENCE
	keyclub.org	204,917	5,877	45	Students age 14-18
	buildersclub.org	26,976	1,124	21	Students age 11-14
	k-kids.org	22,724	988	23	Students age 6-12

Abuse and today's youth



- Teen girls are experiencing record high levels of violence, sadness and suicide risk.
- LGBTQ+ teens continue to face extremely high levels of violence and mental health challenges.
- 5 in 6 cyberbullied teens are also emotionally and violently abused at home.
- Nearly half of all U.S. teens have been bullied or harassed online.

Today's generations

Gen Z: 1997 to 2012

- Digital natives
- Tech savvy
- Social consciousness

Gen Alpha: 2012 to 2024

- More global and diverse generation
- Living through global pandemic
- iPad generation

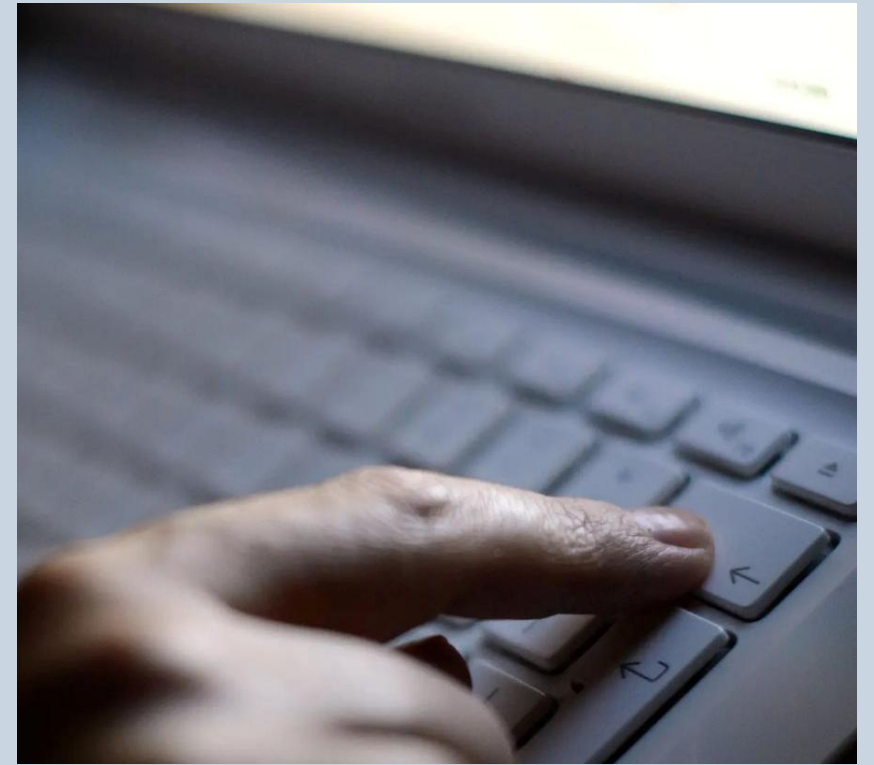
*Information from the CDC and Pew Research Center.

Abuse also happens online



New technologies lead to new dangers.

- Up to 20% of 12- to 17-year-olds have experienced online sexual exploitation and abuse.
- Varied concerns: visually explicit material, fantasy and offline contact.
- Perpetrators often portray themselves as minors.
- Strategies include gaining access and isolation.
- Sexual topics are often introduced on the first day of contact.
- The majority take conversations offline.
- 80% of perpetrators are known to victims.
- Minors who have a sexual relationship offline typically consider it consensual.



Where abuse happens



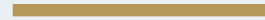
- Typically in private spaces (bathrooms, cars/buses or hotel)
- Also online through texting, sexting, pornography or social media
- One-on-one access — to groom and assert emotional control.

Kiwanis Youth Protection goals



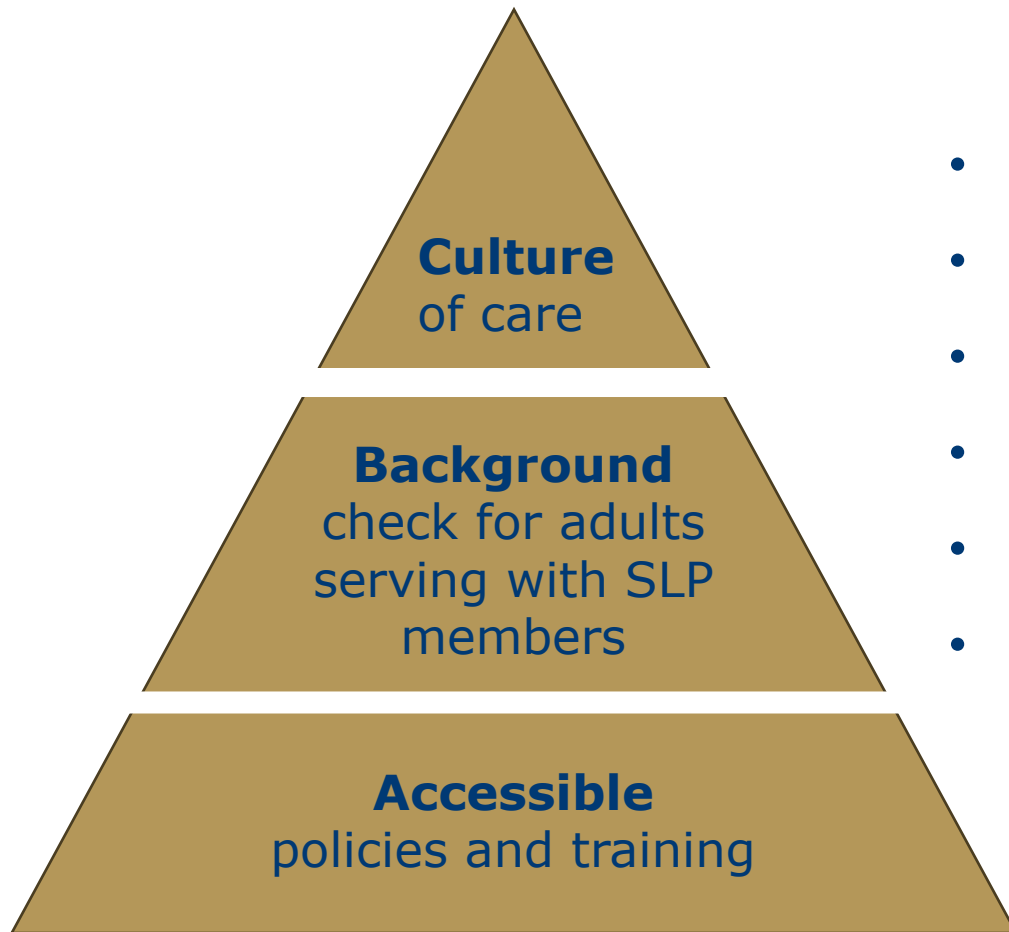
Protect, educate and engage all Kiwanis members — both youth and adult.

- Empower and educate adult members with best practices when working with youth.
- Protect youth from predators.
- Provide youth with skills and tools designed to inspire and engage future leaders to be their best.



Kiwanis Youth Protection Policies and Practices

ABCs of youth protection



- Prevent adult-to-youth abuse and peer-to-peer abuse.
- Identify concerning behaviors.
- Monitor and supervise youth.
- Mitigate risky situations with supervision.
- Report emergencies or red flag incidents.
- Model safe, appropriate behaviors.

Why abuse prevention education matters



When people know youth have been educated on this topic, they are less likely to target those youth.

Everyone needs to know what is OK and what is not OK for adults to do.

Education increases disclosures, which leads to interrupting additional abuse and to more youth getting help.



Access policy & prevention training



- Annual policy review by Kiwanis clubs
- Background checks
- Chaperone ratios
- Social media
- Transportation
- Medication

YOUTH PROTECTION & BACKGROUND CHECKS

As the premier provider of youth service clubs and programs, Kiwanis International holds itself and its members to the highest standards of conduct and awareness.

Each year, more than 300,000 youth take part in Kiwanis Service Leadership Programs (SLPs) such as K-Kids, Builders Club and Key Club. Kiwanis reaches millions more youth around the world through club and district service projects. When we work with and mentor youth during projects and activities, their care and welfare are entrusted to us.

Kiwanis members must know how to protect the youth with whom we interact. When we all share this commitment, we also protect ourselves and the organization we value.

Kiwanis International has taken extensive action to equip Kiwanis clubs, districts and SLPs with the tools to provide safe and secure environments for youth. Resources include a [24/7 toll-free helpline](#), as well as a roster of [youth protection managers](#) for each Kiwanis district. ([Click here](#) for the youth protection managers' job description.)

Other information and resources

- [Youth protection training](#)
- [Youth protection policy training for chaperones](#)
- [Policies and procedures](#)
- [Culture of care](#)
- [Youth Protection Week](#)
- [Background checks](#)
- [Background checks – California residents only](#)
- [Bully prevention](#)
- [District Administrators' Code of Ethics example](#)



For resources and training, go to kiwanis.org/youthprotection and click on the youth protection training link on the left.

Accessible training



DISTRICTS:

FORUMS OR WORKSHOPS
AT CONVENTIONS AND
CONFERENCES



DISTRICT YOUTH
PROTECTION
MANAGERS:

VIRTUAL OR IN-PERSON
CLUB TRAINING



Accessible Youth Protection Policy training



Kiwanis policy requires Kiwanis clubs to review youth protection policies annually.

- Club group activity
- Every Kiwanis year (October 1 – September 30)
- Education sessions at district conferences
- Training slide deck, recording and background check FAQ available online:

kiwanis.org/youthprotection



Accessible club training



Club-level (group), annual, Youth Protection Policy training

- Every Kiwanis club is expected to inform and educate its members on these guidelines.
- Use these slides or webinar video (both on the website.)
- Club secretaries report completed training on the Kiwanis Engage Secretary Dashboard.



Service Leadership Programs

☐ Our club has received Youth Protection Guidelines training.

Accessible online youth protection courses

PraesidiumAcademy.com



Refresh every
two years



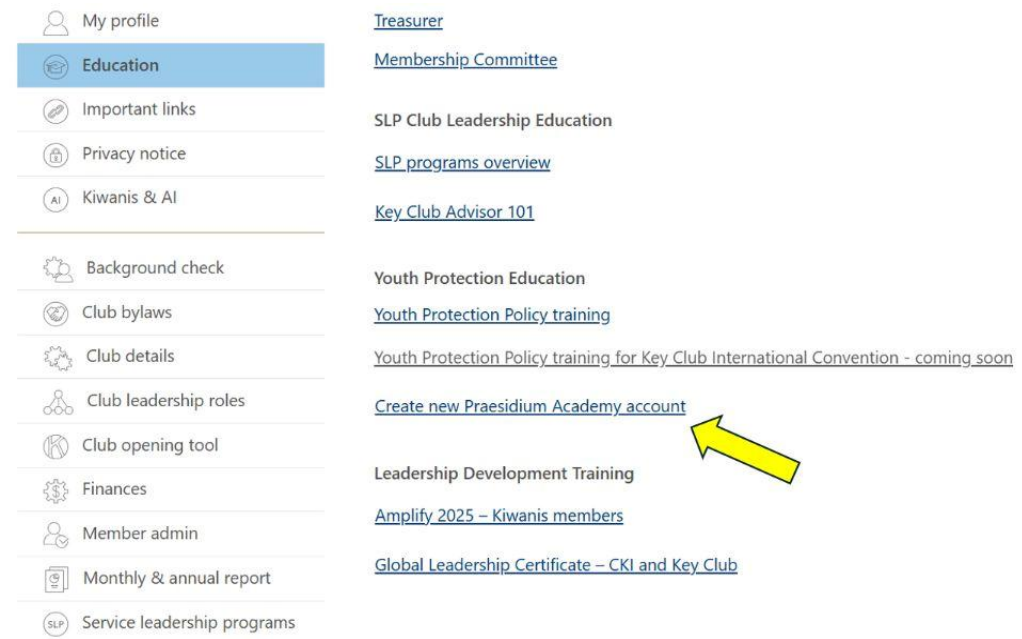
Some courses available
in French and Spanish

Course	SLP Youth Protection & risk managers	SLP DAs & advisors (CKI, Builders and Key Clubs)	SLP DAs & advisors (K-Kids and Aktion Clubs)	Non-advisor members (Gov, LTG, Club Officers) & Non-member Chaperones (Faculty, Parent, Spouse)
Abuse Risk Management for Volunteers	X	X	X	X
Social Media Safety	X	X	X	X
Preventing Sexual Activity Among Adolescents	X	X		X
Duty to Report	X	X	X	
Meet Sam	X	X	X	
It Happened to Me	X	X	X	
Safety Equation: Monitoring & Supervision	X		X	

How to log into Praesidium Academy

Kiwanis members self-initiate a learner account:

1. In Kiwanis Engage, click “Education” and then “Create new Praesidium Academy account.” (If you already have a Praesidium account, it will say “Access Praesidium Academy.” Click it to go to Praesidium Academy.)
2. Check your email for invitation to access account.
3. Click on “Forgot Password” to create a new password.



Note: Kiwanis International will continue using Praesidium Academy until youth protection training courses can be customized.



Preventing false allegations

- Remain in an area where other adults and youth can see you:
 - Work in sight of others.
 - Don't go into an enclosed space alone with a youth. Take 2 or more youth, or stand outside to supervise.
- Avoid physical contact.



Background checks: What are they?



- Safe Hiring Solutions background checks are valid for 2 years.
- Kiwanis SLP advisors' cost is US\$35.
- Members and nonmember chaperones pay US \$35 — and **any additional fees** required by their county, state or country.
- A background check invitation link will be sent to the email on file. (*Check spam folder.*)
- In U.S., it may take 7-14 days to process. Outside U.S., may take up to 30-45 days.
- When submitting chaperones for an event, allow adequate time for processing, depending on your location.
- Our vendor allows background checks to be renewed started 30 days before the expiration date. If you attempt to begin the process earlier, you will receive an error message. We're currently working with our developers to address an issue with renewal notices being sent out too early. The new Engage system is currently configured to send renewal links 60 days prior to expiration, and we're in the process of correcting this.
- *Background check steps are different for California and Canada. Email backgroundchecks@kiwanis.org for your location's link.*

Also see kiwanis.org/policy-requirements-for-california-volunteers.

Other important policies



Virtual SLP club events



We advise at least 2 or 3 background-checked adults in virtual programs.



Understand policies: Online & electronic communication

Social media connections

Never initiate, follow, friend, or like posts or pages of individual youth

Social media connections

Connect via an SLP club page/ account and not individual member account

Social media posts

Treat all social posts and interactions as professional and public

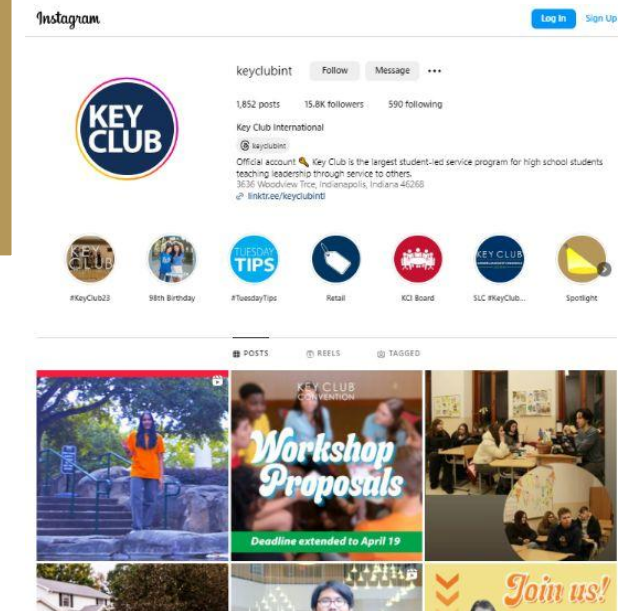


Photos

- Get parent/ guardian permission; **never** post on personal social media

Rule of 3

- **Avoid** 1:1 youth-to-adult texts, emails or phone calls. Add a second adult (e.g., another advisor/DA, parent or guardian).



Understand policies: Requirements for Kiwanis advisors and member/nonmember chaperones



- Must be 21 years or older. (Some districts' age requirement is 25 years old to chaperone a SLP event.)
- Maintain a clear Kiwanis background check.
- Review the Kiwanis Youth Protection Policy.
- Complete abuse prevention online courses through Praesidium Academy.
- Consider your ability to supervise and monitor — and check in with members regularly.
- Allow one adult to tend to an urgent situation while others lead the group.

Transportation

Best practices:

- Adults driving are considered chaperones and need a Kiwanis International background check.
- Have at least three people in a car.
- Youth should ride in the back seat/rows.
- Get parent/guardian approval before transporting.
- Follow local school and traffic safety laws.
- Do not text or use phone while driving.



Understand policies: Adult-to-youth ratios



Single day on school premises:

At least 1 chaperone to 50 members. And follow school background check & chaperone requirements.



SLP single-day, off-school-premises event:

1 chaperone to 50 SLP members



Overnight SLP event:

Minimum 1 background-checked adult per 10 youth
1 adult male to supervise no more than 10 youth males
1 adult female to supervise no more than 10 youth females



Overnight SLP event:

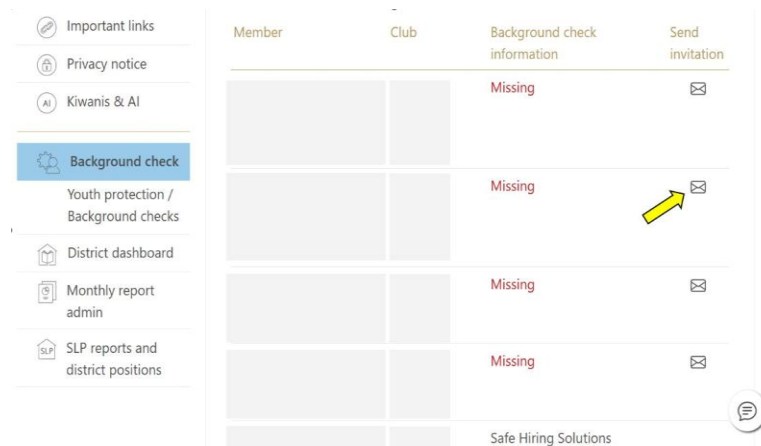
Adults MUST NOT share sleeping quarters with youth except with their own child. An exception would be a bunkhouse or camp cabin setting where we recommend two adults per cabin.

Background checks: Required for whom?



Leadership position	Current Kiwanis background check	Review YP Policy annually	Complete Praesidium courses
Kiwanis International Board/KYP Board	X	X	
District governors/governor-elects	X	X	Required for some districts' distinguished awards
District youth protection & risk managers	X	X	6 courses
SLP district administrators	X	X	6 courses
Kiwanis member SLP advisor	X	X	6 courses
Faculty advisor (not Kiwanis member)	If serving as chaperone off campus	X	3 courses if serving as chaperone off campus
Kiwanis member chaperoning SLP event	X	x	3 courses
Non-Kiwanis chaperone	X	X	3 courses
Kiwanis club officers or member volunteer with community (non-SLP) youth		X	

Background checks: How do I get one?



U.S. Kiwanis club and district secretaries or members: Click “envelope” link in Kiwanis Engage for individual member link. (Check spam folder if you don't receive it.)



Advisors or members from the Caribbean, South America, Europe, Asia and the Pacific regions must email a request to backgroundchecks@kiwanis.org

*Canadian and French members can send their Vulnerable Sector Check to backgroundchecks@kiwanis.org.



Faculty advisors, parents, non-member or Kiwanis spouses that will be serving as off-school grounds chaperone will need to email a request to backgroundchecks@kiwanis.org



Know how to protect and respond

Reporting troubling behaviors



See something?
Hear something?
Say something.

Contact event leader



- Immediately stop abuse or inappropriate behavior.
- Separate youth from the accused.
- Contact the event leader (if it's not you).
- Decide whether you or the event leader will report the incident.
- Gather notes before call:
 - Time of incident
 - Information of individuals involved
 - Action taken (different from investigating)



YOUTH PROTECTION HELPLINE 866-607-SAFE (7233)

Call the Youth Protection Helpline



YOUTH PROTECTION HELPLINE 866-607-SAFE (7233)

- Put this number in your phone!
- Helpline is staffed 24/7 by intake professionals at Praesidium Inc. They provide guidance about follow-up and report back to the Kiwanis Youth Protection team.
- Anyone can call Helpline — including members, chaperones, parents and others. Callers may remain anonymous.

Important reminders



- **Maintain confidentiality** of the accused, accuser and others.
- **You are not an investigator.** You are a support and a guide.
- **You are not a judge.** Record and report the information to others.



Culture of Care



Kiwanis Culture of Care initiatives provide students with resources to:

- Prevent bullying.
- Be an upstander.
- Locate mental health resources.
- Understand healthy communications.
- Respect personal boundaries.

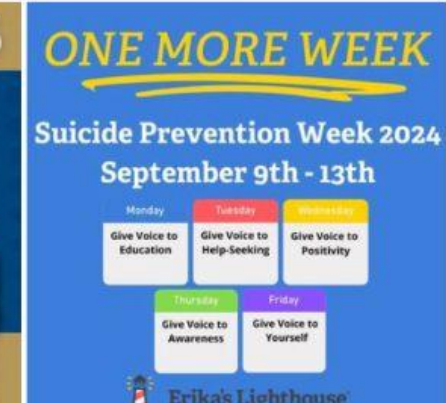
And more!



Culture of Care: Youth mental health

- Depression is the most common mental health disorder among teens.
- Rates of depression have increased 45-60% among youth since 2009.
- 3 of 4 teens with depression also have diagnosed anxiety. 50% have behavior problems.

Instagram



Log In Sign Up



Erika's Lighthouse

Culture of Care: Partners and resources



CKI + Active Minds

- Changing the conversation about mental health on college campuses
- Self-care resources



Key Club + Erika's Lighthouse

- Depression education
- Teen empowerment videos
- Teen mental health awareness



Builders Club/K-Kids

- Meeting kits on club webpages
- Anti-bullying resources
- Happiness resources

www.buildersclub.org

www.kiwaniskids.org

Culture of Care: Kiwanis membership



- Everyone should know safety is a part of volunteering with youth.
- Treat youth protection as a team activity.
- Appoint qualified members as district SLP administrators, assistant administrators and youth protection managers.
- Promote youth protection training and background check compliance, as a first quarter (October–December) priority.
- Know the steps if abuse or red-flag behavior is reported to you.
- Safe environments and a culture of care empower youth.

Questions and answers

