

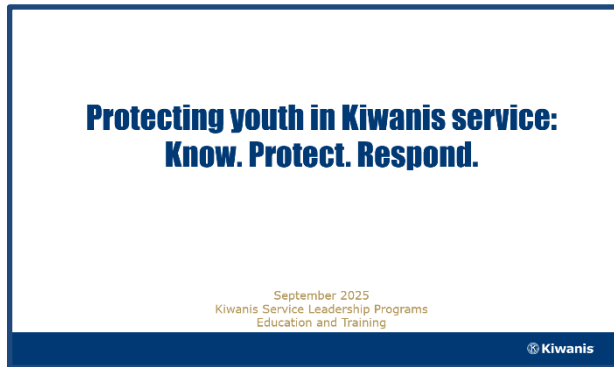
Youth Protection Powerpoint Training Facilitator Guide

Use the following guide as an aid in giving the Youth Protection Policy Training at any Kiwanis club or district event. This guide is a companion piece of presenter notes/script to the Powerpoint presentation pdf at kiwanis.org/youth-protection-training.

Slide

Script

1.



Hello. I'm (NAME, TITLE) with Kiwanis International. Thank you for joining me to learn why youth protection matters and what role you can play in keeping the youth in our programs safe. Let's get started!

2.

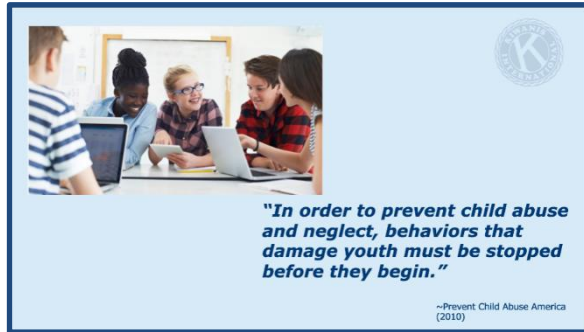


Whether you are a district leader, local club member or officer, Service Leadership Programs advisor, or chaperone, you have a vital role to play in protecting our youth. Thank you for taking the time to listen to this important topic.

The goal for today's training session is to increase your confidence in knowing the following information: how to check if your background check is valid, where you can find Kiwanis Youth Protection Policies & Procedures, understand the Kiwanis Culture of Care, and how to report abuse, inappropriate behavior, and policy violations.

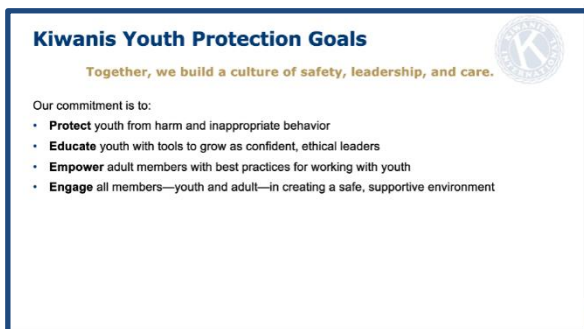
Some of the policies and examples may be uncomfortable or triggering for you. At any time, feel free to step away and come back when you feel ready.

3.



- In February 2023, the CDC reported that teen girls are experiencing record high levels of violence, sadness and suicide risk.
- LGBTQ+ teens continue to face extremely high levels of violence and mental health challenges.
- A CDC survey shows that 5 in 6 cyberbullied teens are also emotionally and violently abused at home by parents or grownups.
- A 2022 Pew Research Center survey on teens and cyberbullying revealed that nearly half of all U.S. teens have been bullied or harassed online.

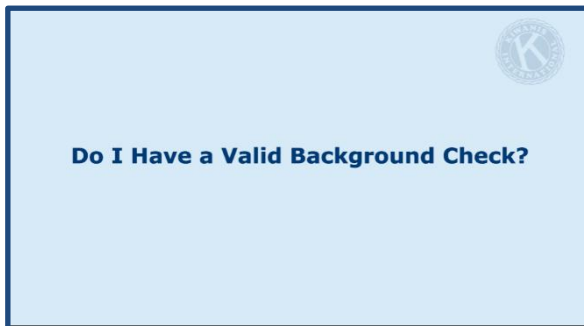
4.



Knowing more about why youth protection matters, let's clarify our goals for Kiwanis youth protection.

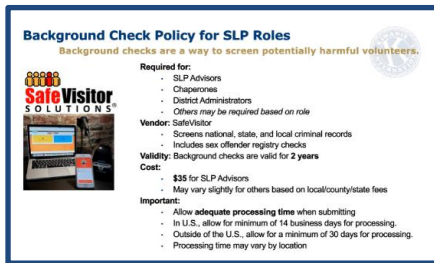
We aim to protect, educate, and engage all Kiwanis members, youth and adult, so that we prevent, intervene and respond to physical, sexual, and mental harm & abuse.

5.



(Read the title of the slide.)

6.



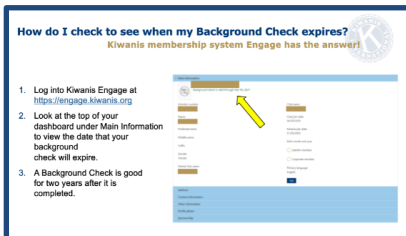
Kiwanis Youth Protection Policy requires that all Kiwanis members serving as Service Leadership Programs (SLP) advisors, district administrators, or chaperones – whether members or non-members – must have a Kiwanis-approved background check on file.

While schools, states, or countries may utilize different background check vendors, Kiwanis mandates the use of its designated provider for liability purposes. Additional Kiwanis leadership roles may also require background checks, as outlined in the official *Kiwanis Policies and Procedures*.

Kiwanis contracts with Safe Hiring Solution's Safe Visitor system to provide an online application portal for U.S., Caribbean, and other members to secure a background check. Clubs often background check multiple volunteers to have backup chaperones, especially during Fall Rally time and District conventions.

Note that due to California state law, California residents have a different background check process. Please see our website for instructions. You can get there from kiwanis.org/youth-protection.

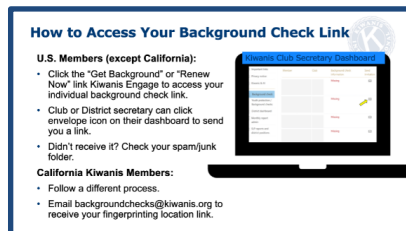
7.



Log into Engage using your log-in information which is the email address you have on file with Kiwanis International and the password you set. Your background check information should be at the top of your member dashboard. If it is not there, contact KI at backgroundchecks@kiwanis.org for assistance.

Again, a background check is valid for two years after it is completed.

8.



There are multiple ways to begin the background check application process so that the Kiwanis level of screening can be done by Safe Hiring. Depending on which country you live in, your country may have slightly different laws and processes. US members can self-initiate a link or ask their club secretary to send a link to the online background check application.

9.

How to Access Your Background Check Link



International Members:

- Caribbean, South America, Europe, Asia, Pacific: Email backgroundchecks@kiwanis.org to request a background check link.
- Canada and France: Submit your Vulnerable Sector Check to backgroundchecks@kiwanis.org.

Other Roles (Faculty Advisors, Parents, Non-Members, Kiwanis Spouses):

- If serving as an off-school grounds chaperone, email backgroundchecks@kiwanis.org to request a link.

In the Caribbean, South America, Europe, Asia and the Pacific region, individuals or secretaries can request an individual link to start an online application by emailing backgroundchecks@kiwanis.org

Canada and France do not allow a third-party search, so Safe Hiring isn't able to screen records. As an alternative, those members are asked to visit their local police station to get a vulnerable sector check (as it's called in Canada) and send it to Kiwanis International for verification by email or post.

10.

**Where can I find
Kiwanis Youth Protection Policies & Practices?**

(Read the title of the slide.)

11.

Youth Protection Policies & Procedures
Visit our website Kiwanis.org/youthprotection





© Kiwanis

Clubs annually review policy. Find info on social media and transportation best practices.

Kiwanis.org/youthprotection webpage has training slide deck, recordings, links to past webinars, and background check FAQ.

Members receive training in-person or virtual conferences, conventions, webinars, or club meetings

Kiwanis and our Service Leadership Programs (SLP) department strive to make policy and prevention training accessible to volunteers and leaders working with our SLPS.

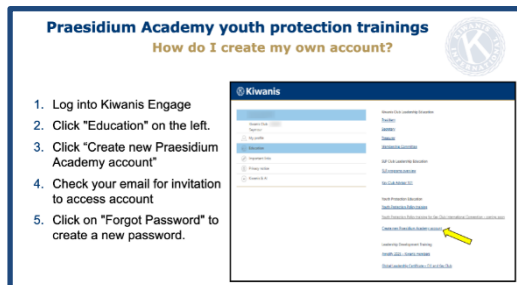
1. There is our online Kiwanis Youth Protection policy document.
2. Our Kiwanis youth protection webpage contains links to multiple resources.
3. Your district youth protection manager exhibits a table in-person at a district Kiwanis convention.

12.



All members can access Praesidium courses. Depending on your role with SLPs, you may be required to complete 3 or 6 courses. Your account will be pre-populated with courses.

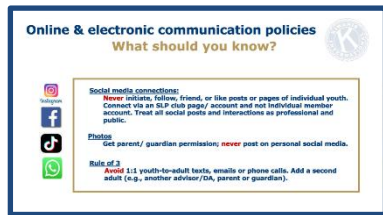
13.



To create an account in Praesidium, log into Engage, click “Education,” then click "Create your Praesidium Account." If it says “Access Praesidium Academy” instead, then you already have an account and can click the link to access your courses. Or, you can go directly to [praesidiumacademy.com](https://www.praesidiumacademy.com) to log in.

Kiwanis International will continue to use Praesidium for youth protection training until the trainings can be customized. If you have questions or encounter a technical difficulty, email us at youthprotection@kiwanis.org.

14.



The National Center for Missing and Exploited Children received close to 85 million online files containing child sexual abuse material in 2021. For this, and other reasons, we want youth to know we expect their online and electronic interactions with adults to remain public.

For social media connections and friending or following, Kiwanis has policy about social media and electronic communications with youth. Adult KI members, advisors, chaperones, etc. should not maintain private social media connections with a youth program member and should only use social media to communicate to a closed page/group of several participants. Never initiate, follow, friend, or like posts or pages of individual youth. Never tag a minor or share their username or handle online. This could threaten their safety by revealing their interests or the locations they visit often. Remember that everything on the internet should be kept professional, as it is a public forum. Avoid harsh, coercive, threatening, intimidating, derogatory, or humiliating comments or sexual conversations or images.

For email, texting, and WhatsUp group chats, remember the rule of threes and avoid one-on-one contact online just as you would in person. When contacting by email, text, Whatsup group chat or virtual meetings, there should always be at least two adults copied whether it be a background checked/trained advisor, DA or chaperone or the student's parent. This helps decrease the risk for misunderstandings or inappropriate interactions. Outline specific times for when communication can be sent between volunteers and youth (e.g. during the day only). If communication occurs outside of the designated timeframe, that could serve as a warning that interactions between volunteers and/or participants should be monitored more closely.

For student photos, while we love seeing and posting photos of Kiwanis youth, make sure you have signed parent/guardian permission slip before a club posts a youth photo. Group photos are okay from the back of youth or blurring youth faces. Don't post a youth photo on a personal advisor or KI member's page.

15.

Transportation

Best practices:

- Adults driving are considered chaperones and need a Kiwanis International background check.
- Have at least three people in a car.
- Youth should ride in the back seat/rows.
- Get parent/guardian approval before transporting.
- Follow local school and traffic safety laws.
- Do not text or use phone while driving.



Sometimes your activity will involve transporting youth. Again, follow the rule of threes, and make sure there are always three people in the car. When possible, youth should ride in the back. Make sure you have parent or guardian approval for the transportation, that you are following local traffic safety rules and laws, and that all drivers know not to text or use the phone while driving.

16.



What is the Kiwanis Culture of Care?

(Read the title of the slide.)

17.

Creating a Culture of Care: Peers helping Peers

Creating a safe, supportive environment for all youth

Our Kiwanis Culture of Care training provide youth members with resources to:

- Prevent bullying.
- Be an upstander.
- Access mental health resources.
- Communicate healthy
- Understand and respect personal boundaries.
- And more!



Kiwanis strives to create a Culture of Care.

Our student leaders are our No. 1 ally and resource in creating world-class experiences within Kiwanis Youth Programs. Our Culture of Care initiative provides students with the training and resources to be leaders in preventing bullying, reducing incidences of violence, understanding healthy relationships and personal boundaries, and more.

The Culture of Care training provides Youth Programs members with meeting agendas and facilitation guides.

18.

Culture of Care – Youth Mental Health

- Depression is the most common mental health disorder among teens
- Rates of depression have increased 45-60% among youth since 2009
- 3 of 4 teens with depression also have diagnosed anxiety and half have behavior problems



Depression is common. Depression is serious. Depression is treatable. It's also the most common mental health disorder among teens. In fact, it has increased significantly over recent years – and many of those teens have reported anxiety and behavior problems. We have made this a priority in our culture of care. Everyone knows someone experiencing depression which means it is an opportunity to talk about it in a normalized way.

19.

Kiwanis Culture of Care
Partners and resources

CKI + Active Minds

- Changing the conversation about mental health on college campuses
- Self-care resources



Key Club + Erika's Lighthouse

- Depression education
- Teen empowerment videos
- Teen mental health awareness



Builders Club/K-Kids

- Meeting Kits on club webpages
- Anti-bullying
- Happiness



- With the Culture of Care, Kiwanis has partnered with other organizations to promote mental health and share self-care resources.
- CKI partners with Active Minds to change conversation about mental health on college campuses.
- Key Club partners with Erika's Lighthouse Beacon of Hope to deliver depression education, teen empowerment, and teen mental health awareness.
- Builders Club and K-Kids have meeting kits, including an agenda and activities that can be used during a club meeting. Find them on their respective webpages.

20.

How do I report troubling behaviors?

(Read the title of the slide.)

21.

How do I report troubling behaviors?
Contact event leader

Action steps:

- Immediately stop abuse or inappropriate behavior.
- Separate youth from the accused.
- Contact the event leader (if it's not you).
- Decide whether you or the event leader will report the incident.
- Call Youth Protection Helpline
- Gather notes before call:
 - Time of incident
 - Information of individuals involved
 - Action taken (different from investigating)

YOUTH PROTECTION HELPLINE 866-607-SAFE (7233)



Please notify Kiwanis International about an accident, injury, suspect child abuse, exploitation or neglect, or youth protection policy violation or any other situation that may affect a young person's safety or well-being. Follow all local and national reporting laws, report immediately to your local child protective services or report to local law enforcement if the situation requires it. We take all reports seriously and encourage everyone to report youth protection concerns, regardless of when the incidents occurred.

Depending on who is involved in an alleged incident, whether it is peer youth-to-peer youth or adult-to-youth, appropriately contact parents/guardians, advisors or school administrators of affected youth.

22.

What else can I do?
Call the helpline!

See Something?
Hear Something?
Say Something.

YOUTH PROTECTION HELPLINE 866-607-SAFE (7233)

The helpline is staffed 24/7 by intake professionals at Praesidium Inc. They provide guidance about follow-up and report back to the Kiwanis Youth Protection team.

If you observe or learn of behavior that is inappropriate, unsafe, violates policy, or is illegal, even if the event has passed, it's simple. *You must say something.* You may be the one person who can make a difference. Reporting when you see troubling behavior could prevent further harm and save other children from abuse, and it contributes to the safety of members and clubs.

23.

Apply what we know...
Scenario 1:

At your annual Summer 4th of July festival, several of your club members partnered with Builders Club students to sell lemon shake-ups. During your shift, you see a Kiwanis member smack the bottom of one of the Builders Club girls when she was turned around. What should you do?

- 1) Make sure you are following Youth Protection policies (For example, background checks and chaperone ratio policy).
- 2) Separate the Kiwanis member and girl to stop their interaction. Talk with the girl to see if she is okay.
- 3) Report the incident to your event chair or club president.
- 4) Report incident to Kiwanis Youth Protection Helpline at 866-607-7233.

Let's apply what we know. Here is Scenario 1...(read the rest of the slide).

24.

Apply what we know...
Scenario 2:

Your Kiwanis club is partnering with K-Kids club members to do a volunteer clean-up at a local park. You see another Kiwanis club member drive up with a K-Kid member in their car. You also see that person taking pictures throughout the event. What youth protection policies should you follow to meet Kiwanis best practices?

- 1) The driver should travel with at least one more person in the car to meet the rule of three.
- 2) They should have parental permission to transport the K-Kids member.
- 3) Ensure that photo permissions have been obtained from parents or guardians of all youth being photographed. Photos should only be used for approved purposes, and care should be taken not to post or share images of youth without consent.
- 4) They should have a valid background check on file with Kiwanis International.

Here is Scenario 2...(read the rest of the slide).

25.

Apply what we know...
Scenario 3:

You are serving as a chaperone at a DCON, ICON or Key Leader event which involves staying overnight to supervise students. What youth protection training do you need to meet Kiwanis requirements?

- 1) You should be age 21 or older. *Some districts require the minimum age of 25.
- 2) You should have a current background check on file with Kiwanis International.
- 3) You should have completed the three youth protection trainings through Presidium: Abuse Risk Management for Volunteers, Social Media Safety and Preventing Sexual Activity Between Adolescents.

Here is Scenario 3...(read the rest of the slide).

26.

Questions and answers

Are there any questions?

(If there are questions, pause the video.)

You can contact the Kiwanis youth protection team at these email addresses or by calling 1-800-KIWANIS.

Kiwanis Youth Protection

U.S. & Canada: 1-800-KIWANIS

backgroundchecks@kiwanis.org
Youthprotection@kiwanis.org